

# 2010 Stormwater Bond

September 15, 2010

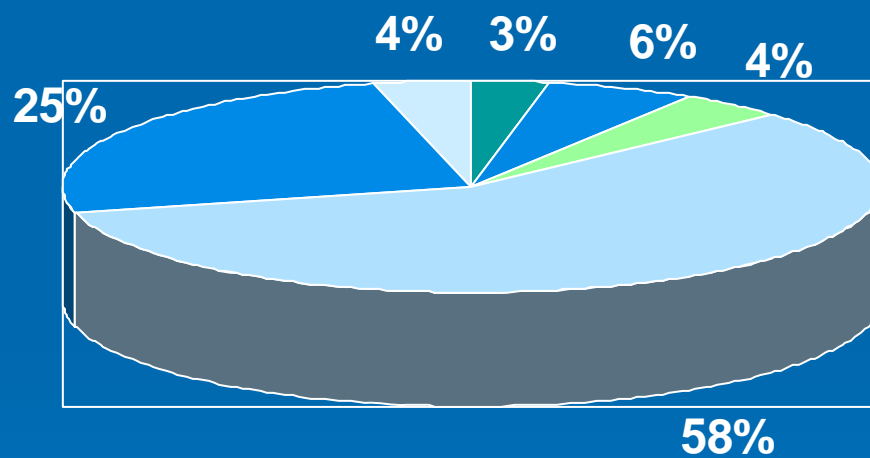


# Stormwater Bonds Used to Fund

- Water Quality Projects
- Stream Rehabilitation of Parks Property
- Floodplain/Floodprone Area Projects
- Urban Storm Drainage Projects
- Comprehensive Watershed Master Plans and Projects

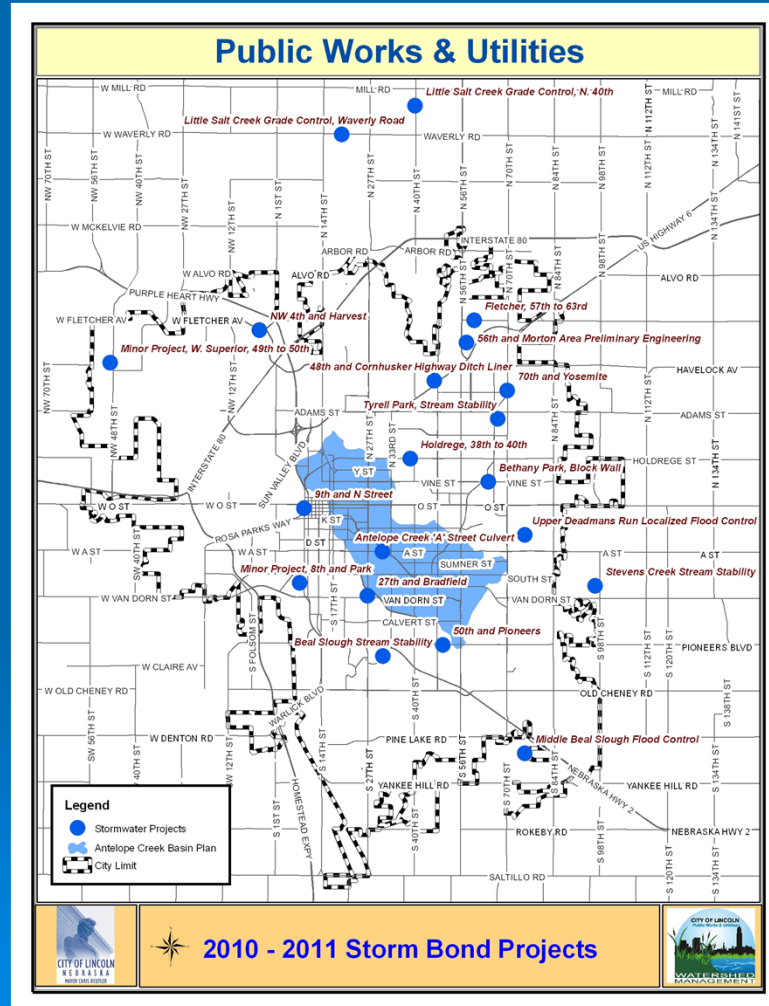


# Percentage Funds per Project Type



- WQ Projects
- Stream Stability
- Floodplain
- Urban Storm
- Master Plan & Projects
- Financing

# Stormwater Bond Projects



# Improve Water Quality



# Stabilize Stream Banks



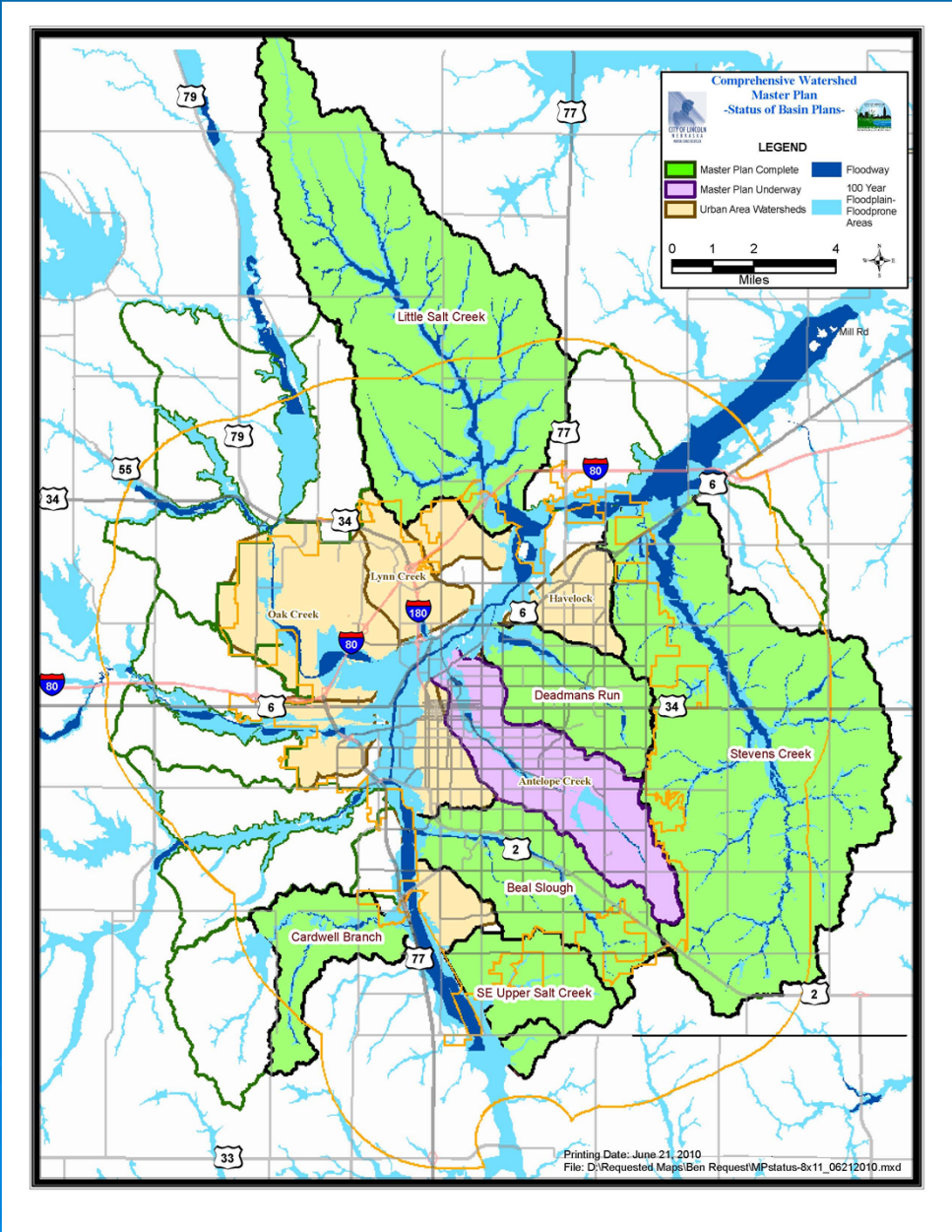
# Reduce Localized Flooding



# Urban Drainage Projects



# Regional Planning



# Watershed Master Plan Project



# Bond History

➤ 1983	\$2.55M	➤ 2001	\$7.50M
➤ 1986	\$6.80M	➤ 2003	\$10.00M
➤ 1991	\$5.60M	➤ 2005	\$9.95M
➤ 1995	\$4.00M	➤ 2007	\$8.30M
➤ 1997	\$8.30M		

# Bond History

- From \$8.5M 2007 Bond, \$7.54 expended or committed
  - \$6.00M expended
  - \$1.54M committed
- Two of the initial 2007 bond construction projects delayed
  - Beal Slough stream stability under construction
  - Beal Slough flood control under design

# 2010 Stormwater Bond

- \$8.2M Stormwater Bond on November 2, 2010 Ballot
- 4% Rate
- \$3.82/\$100K per year

# 2010 Stormwater Bond

- Proposed projects address both the existing urban area and new growth areas
- Projects affect urban drainage, floodplain management, water quality and streams stability
  - City mandated to address water quality due to state and federal permits



# 2010 Stormwater Bond

- Projects identified through a peer-reviewed prioritization process
- Approximately 45 urban storm drainage projects identified
- Approximately 30 watershed master plan projects identified



lincoln.ne.gov, keyword 'watershed'

